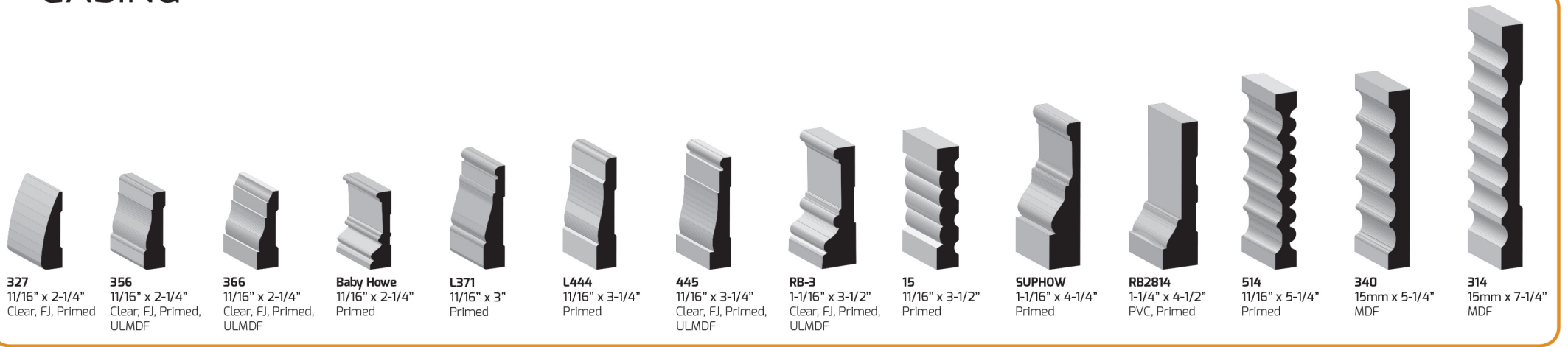
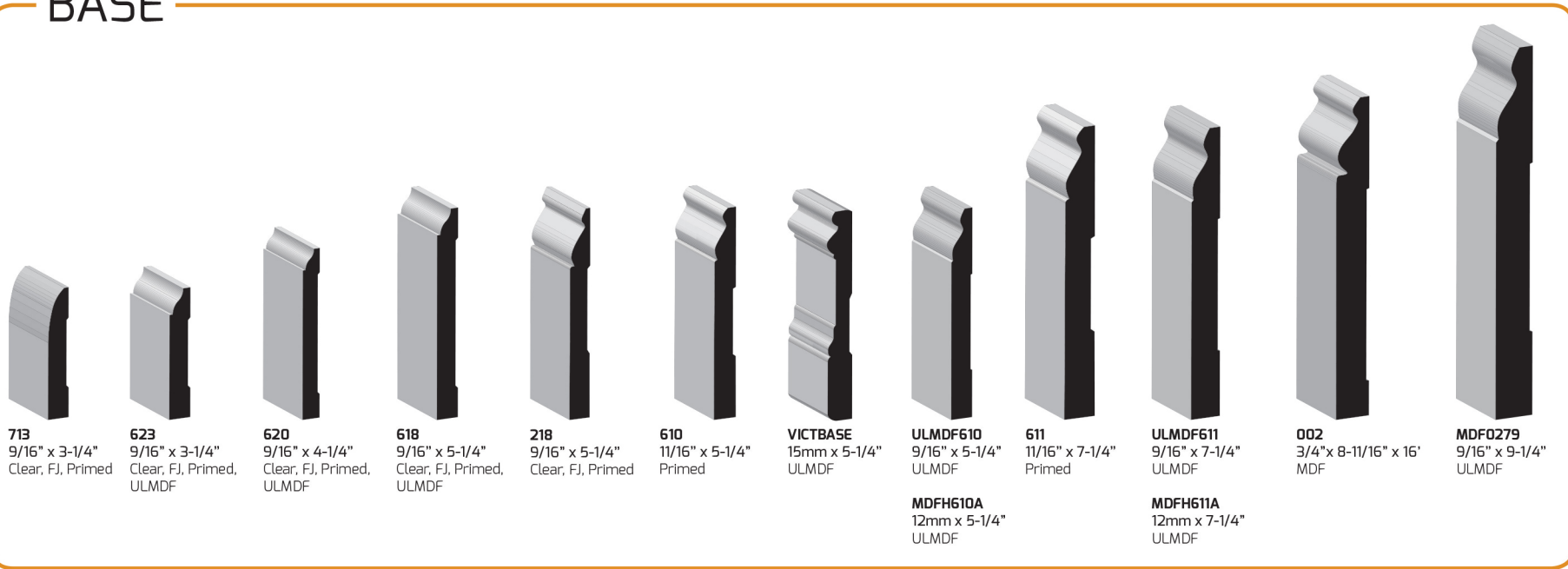


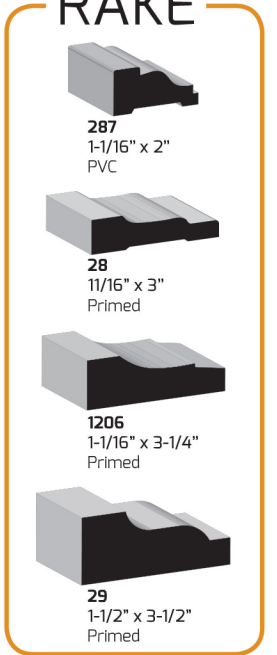
CASING



BASE



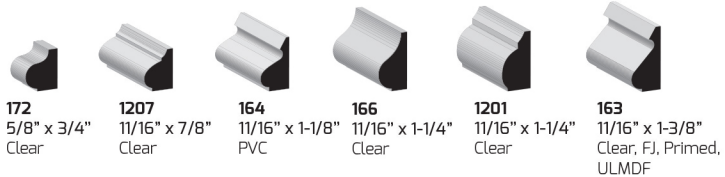
RAKE



CROWN/BED

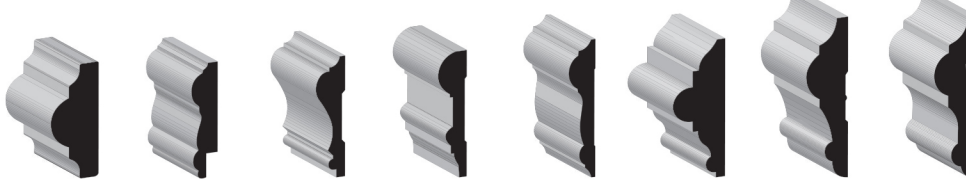


BASE CAP



172 5/8" x 3/4" Clear
 1207 11/16" x 7/8" Clear
 164 11/16" x 1-1/8" PVC
 166 11/16" x 1-1/4" Clear
 1201 11/16" x 1-1/4" Clear
 163 11/16" x 1-3/8" Clear, FJ, Primed, UL MDF

CHAIR RAIL



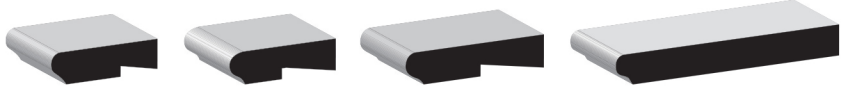
136 1-1/8" x 2-1/2" FJ, PRIMED
 298R 11/16" x 2-1/2" Clear
 390 11/16" x 2-5/8" Clear, FJ, Primed
 1001 11/16" x 2-3/4" FJ
 297 5/8" x 3" Clear, FJ, Primed
 300 1-1/16" x 3" Clear, FJ, Primed
 UL MDF 297 25mm x 3-1/2" UL MDF
 397R 1" x 3-1/2" Primed

DRIP CAP



187 1-1/16" x 2" Primed, PVC (11/16" x 2)
 197 11/16" x 1-5/8" Primed, PVC

STOOL



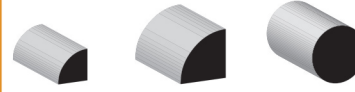
1195 11/16" x 2-1/2" Clear, FJ, Primed
 1099 11/16" x 2-1/2" Clear
 1096 11/16" x 3-1/4" Clear
 1021 11/16" x 5-1/4" FJ, Primed, UL MDF, Clear
 L1021 11/16" x 7-1/4" FJ

SHOE



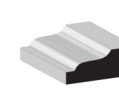
129 7/16" x 11/16" Clear, Primed
 126 1/2" x 3/4" Clear, Oak, Primed

ROUNDS



106 11/16" x 11/16" Clear, Primed, PVC, Oak
 103 1-1/16" x 1-1/16" Clear
 233 1-1/4" Clear

SHINGLE



210 1-1/2" x 1-11/16" PVC, Primed

JOINT MOULD



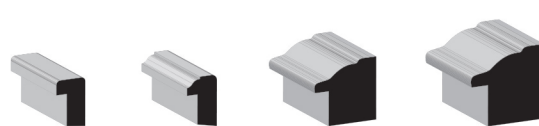
CLOVER 9/16" x 1-1/4" Clear, Primed

STOP



942 7/16" x 9/16" Clear
 941 7/16" x 3/4" Clear
 940 7/16" x 7/8" Clear
 887 3/8" x 1-1/4" Clear
 937 7/16" x 1-1/4" Clear
 936 7/16" x 1-3/8" Clear
 935 7/16" x 1-5/8" Clear
 2149 Garage Stop 7/16" x 2" PVC

BACK BAND



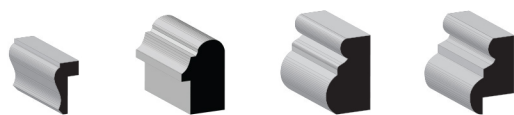
280 11/16" x 1-1/16" Clear
 281 11/16" x 1-1/8" Clear
 RB281 1-5/16" x 1-3/8" FJ, Clear, Primed, PVC
 RB3281 1-3/8" x 1-5/8" FJ, Primed, Clear

MULLION



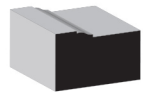
987 3/8" x 2" Clear
 L988 3/8" x 1-3/8" Clear
 L985 5/16" x 1-1/2" Clear

PANEL/CAP



292 9/16" x 1-1/8" Clear
 289 1-1/16" x 1-9/16" Clear
 RB42 1-1/16" x 1-5/8" FJ, Primed
 RB42-RABT 1-1/16" x 1-5/8" FJ, Primed, Clear

BRICK MOULD



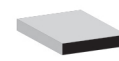
180 1-1/4" x 2" Clear, Primed, PVC

CORNER



206 - R/L 11/16" x 11/16" Clear
 205 - R/L 1-1/8" x 1-1/8" Clear
 206 - 8' 11/16" x 11/16" x 8' Clear
 205 - 8' 1-1/8" x 1-1/8" Clear

LATTICE



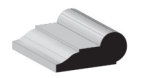
L266 1-1/4" x 1-1/2" Clear, Treated, PVC
 L266 - 8' 1-1/4" x 1-1/2" Clear

APRON



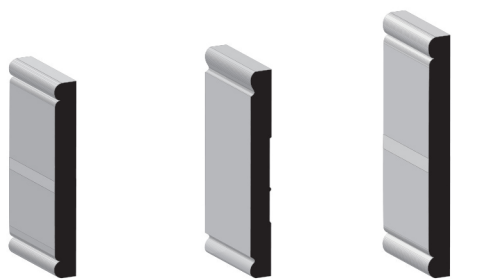
RB-2 11/16" x 2-1/4" FJ, Primed

PICTURE MOULD



273 5/8" x 1-5/8" Clear, FJ, Primed

CHAIR RAIL BACKER



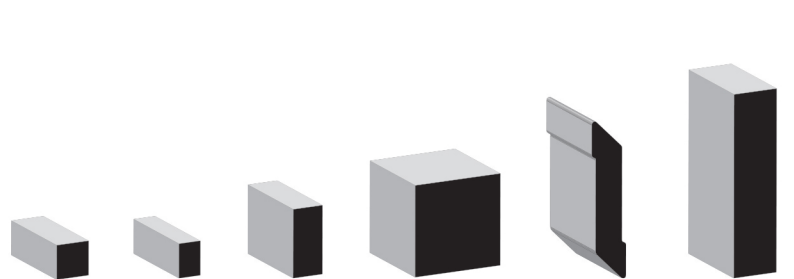
304 9/16" x 4-1/4" Clear
 135 1/2" x 4-1/2" FJ, Primed
 305 9/16" x 5-1/4" UL MDF (504)

HAND RAIL



231 1-1/2" x 1-11/16" Clear
 240 1-1/4" x 2-1/4" Clear, Primed

S4S BOARDS/ S4S STOCK



239 3/4" x 3/4" Clear
 254 1/2" x 3/4" Clear
 249 11/16" x 1-1/2" C&Btr Fir
 236 2" x 2" C&Btr Fir
 Louver Slat 11/16" x 3-1/2" PVC
 1x4 - 1x12 Primed MDF, FJ, Primed FJ

SCREEN



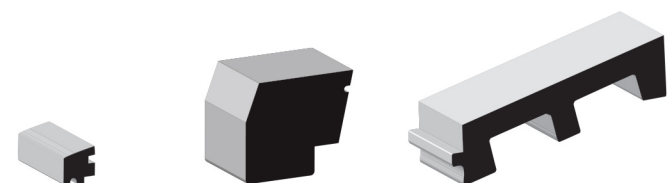
142 1/4" x 3/4" Clear

CHAMFER



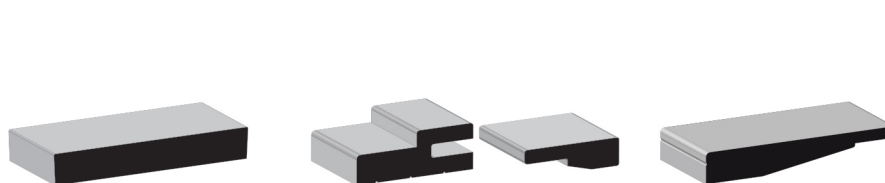
995BANAK 3/4" x 3/4" Clear

SILL



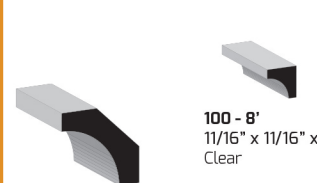
PVMSILLN 1-5/16" x 1-3/8" PVC
 PVC SILLNHIS 1-3/4" x 2-13/16" PVC
 PVMSILL 1-1/4" x 5-1/4" PVC

JAMBS



4-9/16 FLAT 11/16" x 4-9/16" Primed, FJ
 SPLIT JAMB FJ
 SPLIT JAMB EXTENSION 11/16" x 4-1/2" FJ

COVE



85 9/16" x 1-3/4" Clear
 100 - 8' 11/16" x 11/16" x 8' Clear
 100 - R/L 11/16" x 11/16" x R/L Clear